



# Knowledge Co-Creation Program (Group & Region Focus)

General Information

on

Strategy for Resilient Societies to Natural Disasters

課題別研修「災害に強いまちづくり戦略」

JFY2017

NO. J1704253 / ID. 1784485

Course Period in Japan: From January 8, 2018 to February 24, 2018

This information pertains to one of the JICA Knowledge Co-Creation Program (Group & Region Focus) of the Japan International Cooperation Agency (JICA), which shall be implemented as part of the Official Development Assistance of the Government of Japan based on bilateral agreement between both Governments.

## 'JICA Knowledge Co-Creation (KCC) Program' as a New Start

In the Development Cooperation Charter which was released from the Japanese Cabinet in February 2015, it is clearly pointed out that *“In its development cooperation, Japan has maintained the spirit of jointly creating things that suit partner countries while respecting ownership, intentions and intrinsic characteristics of the country concerned based on a field-oriented approach through dialogue and collaboration. It has also maintained the approach of building reciprocal relationships with developing countries in which both sides learn from each other and grow and develop together.”* We believe that this ‘Knowledge Co-Creation Program’ will serve as a center of mutual learning process.

# **I. Concept**

## **Background**

On January 17th, 1995, the Great Hanshin-Awaji Earthquake shook violently Kobe and nearby cities resulting in losses of more than 6,000 lives and property damage of over 10 trillion yen (US\$ 100 billion). The lessons learnt from the past disasters and the future strategies for disaster reduction were encapsulated in the Hyogo Framework for Action 2005 – 2015 (HFA) which was announced at the United Nations World Conference on Disaster Reduction (UNWCDR) held in Kobe in January 2005. The HFA strongly calls for pro-active measures for disaster risk reduction (DRR) and the holistic and comprehensive approaches to integrate efforts of all the stakeholders involved in DRR. On March 11, 2011, the Great East Japan Earthquake and following Tsunami caused unprecedented level of damages to Japan, and DRR is considered as of prime importance more than ever before.

HFA was followed by “Progress and challenges in disaster risk reduction: a contribution towards the development of policy indicators for the post-2015 framework for disaster risk reduction” in 2014, which called for a new paradigm such as land use planning, eco-system management, socio-economic impact assessments, involvement of other stakeholders, and climate change related policies. Besides, “Sendai Framework for Disaster Risk Reduction 2015-2030” was adopted as post-HFA at the UN 3<sup>rd</sup> World Conference on Disaster Risk Reduction in Sendai, Japan, 2015, which is to promote activities on disaster risk reduction worldwide. According to Sendai Framework for DRR, there are 4 Priorities for Action.

1. Understanding disaster risk;
2. Strengthening disaster risk governance to manage disaster risk;
3. Investing in disaster risk reduction for resilience;
4. Enhancing disaster preparedness for effective response, and to “Build Back Better” in recovery, rehabilitation and reconstruction.

In recent decades, we have come to experience an increasing number of natural disasters; some of which are said to be attributed to global climate changes. Under these circumstances, we are forced to consider vulnerabilities of our societies and face challenges in establishing a society resilient to natural disasters.

In Japan, both national government and local governments had been making an effort to strengthen society by taking actions such as the building of strong infrastructure, establishing functional relief operation systems, and strengthening disaster monitoring systems. However, the Government of Japan realized that a society resilient to natural disasters would not be achievable without the involvement of local communities. This is one of the lessons that Japan learned through the Great Hanshin Awaji Earthquake, the Great East Japan Earthquake and the subsequent recovery processes.

Despite the fact that the local communities are essential actors in building disaster resilient societies, people do not consider emergencies that may or may not occur during their life times. Thus, it is an important task for the government to be aware of the necessary components for strengthening their societies and empowering local residents as active partners in DRR.

### **For what?**

This program aims to help participants understand the significance of establishing strategy for Disaster Resilient Societies through sharing not only public-help by local government, but also community-based disaster risk reduction such as mutual-help by community, NPO etc. and self-help by residents in each phase of the Disaster Risk Reduction Management Cycle - Response, Recovery, and Mitigation, Preparedness –.

<Disaster Risk Reduction Management Cycle>

→ Disaster → Relief/Response → Recovery → Mitigation → Preparedness →

### **For whom?**

This program is designed for officials who are engaged in DRR in the countries suffered from the high frequency of natural disasters.

### **How?**

This program consists of lectures, on-site visits, and discussions to provide participants with knowledge of establishing strategy for Disaster Resilient Societies. The program will demonstrate practical methods such as how to build capacities to prepare for and manage disaster situations and raise awareness of citizens based on crisis management system, community-based disaster risk management, etc.

Participants are expected to formulate and present a feasible Action Plan consisting of one or more phases of the disaster risk reduction management cycle to implement upon returning to their countries.

(Reference: in English)

- **Disaster Management in Japan (Cabinet Office, Government of Japan)**  
[http://www.bousai.go.jp/1info/pdf/saigaipamphlet\\_je.pdf#search='cabinet+office+disaster+management'](http://www.bousai.go.jp/1info/pdf/saigaipamphlet_je.pdf#search='cabinet+office+disaster+management')
- **Toward Mainstreaming Disaster Risk Reduction (JICA)**  
[http://gwweb.jica.go.jp/km/FSubject0301.nsf/ff4eb182720efa0f49256bc20018fd25/3958a0a725aba98549257a7900124f29/\\$FILE/E.pdf](http://gwweb.jica.go.jp/km/FSubject0301.nsf/ff4eb182720efa0f49256bc20018fd25/3958a0a725aba98549257a7900124f29/$FILE/E.pdf)
- **Lessons from the Great Hanshin-Awaji Earthquake**  
[http://www.jica.go.jp/kansai/drlc/ku57pq000005kh18-att/04-02\\_jica\\_en.pdf](http://www.jica.go.jp/kansai/drlc/ku57pq000005kh18-att/04-02_jica_en.pdf)

## ***II. Description***

- 1. Title (J-No.):**  
Strategy for Resilient Societies to Natural Disasters (J1704253)
- 2. Course Period in JAPAN:**  
From January 8, 2018 to February 24, 2018
- 3. Target Regions or Countries**  
Egypt, Colombia, Sri Lanka, Chile, Turkey, Nepal, Bahama, Bosnia and Herzegovina
- 4. Eligible / Target Organization:**  
Organizations/Departments in charge of disaster management planning, community development organizations in local government (or central government)
- 5. Course Capacity (Upper limit of Participants):**10 participants
- 6. Language to be used in this program:** English
- 7. Program Objective:**  
To formulate a feasible disaster management plan (Action Plan) conducive to disaster resilient societies under the responsibility of participating organization (or participants.).
- 8. Overall Goal**  
To develop the strategy for disaster resilient societies in the participating countries.

## 9. Expected Module Output and Contents:

This program consists of the following components which are based on a disaster management cycle. (Please refer to P 3)

Details on each component are given below. (Note: subject to change)

<b>(1) Preliminary Phase in a participant's home country</b> (November to December 2017) Participants are required to make preparation for the course in the respective countries.	
Expected Module Output	Activities
To prepare for the core phase in Japan	<ul style="list-style-type: none"> <li>- Applicants are required to prepare a <b>Job Report</b>. Please refer to <b>ANNEX-1</b> for the format of <b>Job Report</b>.</li> <li>- Accepted participants are required to prepare a presentation of Job Report in the core phase in Japan.</li> </ul>

(Note: Please refer to **Annex- 4** for details.)

<b>(2) Core Phase in Japan (From January 8 to February 24, 2018)</b> Participants will attend the program implemented in Japan.		
Expected Module Output	Subjects/Agendas	Methodology
<b>[ Module 1 ]</b> <b>(Relief/Response Phase)</b> <b>To understand the methods and tools to promote the mutual help by community</b>	<ul style="list-style-type: none"> <li>• Emergency disaster information provided by local government, community, etc.</li> <li>• Crisis management system and initial emergency response of Kobe city</li> <li>• Wide-Area disaster management base</li> <li>• Flood damage and countermeasure</li> <li>• Establishment and operation of local evacuation shelters and construction of temporary housing</li> <li>• Support for people requiring assistance during a disaster (gender, elderly, etc.)</li> <li>• Support activities from overseas countries: International cooperation, support activities by NGOs</li> <li>• Reflection of Relief and Response phase (Discussion for 'Knowledge Co-creation')</li> </ul>	Lecture, observation visit, and discussion
<b>[ Module 2 ]</b> <b>(Recovery Phase)</b> <b>To understand the components and process of recovery from the disaster</b>	<ul style="list-style-type: none"> <li>• Recovery plan of Kobe city</li> <li>• City planning: Land readjustment, urban redevelopment</li> <li>• Post earthquake community development from resident's perspective / consultant's perspective</li> <li>• Study trip to disaster affected area of the Great East Japan Earthquake               <ul style="list-style-type: none"> <li>-Characteristics of the Great East Japan Earthquake</li> <li>-Observation of affected area / Story teller</li> <li>-Community reconstruction facilitators</li> </ul> </li> <li>• Mental Health Care(PTSD)</li> </ul>	Lecture, observation visit (including study trip), and discussion

	<ul style="list-style-type: none"> <li>• Reflection of Recovery phase (Discussion for 'Knowledge Co-creation')</li> </ul>	
<p><b>[ Module 3 ]</b> <b>(Mitigation Phase)</b></p> <p><b>To understand the importance of multiple disaster prevention measures</b></p>	<ul style="list-style-type: none"> <li>• Early warning system</li> <li>• Seismic retrofitting</li> <li>• Countermeasure project against erosion control (SABO) in urban area / DONOU Project -Unpaved roads maintenance in developing countries-</li> <li>• Collective relocation for disaster prevention, relocation to higher elevation</li> <li>• Reflection of Mitigation phase and study trip (Discussion for 'Knowledge Co-creation')</li> </ul>	Lecture, observation visit (including study trip), workshop, and discussion
<p><b>[ Module 4 ]</b> <b>(Preparedness Phase)</b></p> <p><b>To understand the importance of raising awareness of disaster reduction through disaster reduction education</b></p>	<ul style="list-style-type: none"> <li>• Voluntary disaster reduction organization (BOKOMI:) by Kobe City</li> <li>• Preventative measures against tsunami -Drill for people requiring assistance during a disaster in BOKOMI-</li> <li>• Human resource development and disaster reduction education in school</li> <li>• Disaster reduction education event -Kaeru (Frog) Caravan Event-</li> <li>• Town walk and Hazard map (Safety map)</li> <li>• Reflection of Preparedness phase (Discussion for 'Knowledge Co-creation')</li> </ul>	Lecture, observation visit ,workshop, event, and discussion
<p><b>[ Module 5 ]</b> <b>( Action Plan )</b></p> <p><b>To formulate an Action Plan with strategy for resilient society to natural disasters</b></p>	<ul style="list-style-type: none"> <li>- Course Orientation</li> <li>- Job Report Presentation</li> <li>- Workshop to learn how to formulate an action plan</li> <li>- Presentation skill</li> <li>- Action Plan Presentation</li> </ul> <p>(Note: Please refer to <b>ANNEX-3</b> for preparation for an action plan)</p>	Lecture, presentation , workshop, and discussion

**(3) Finalization Phase in a participant's home country**

Participating organizations produce final outputs by making use of results brought back by participants. This phase marks the end of the program.

Expected Module Output	Activities
To implement the Action Plan.	Dissemination, finalization and implementation of the action plan in the participant's country.

### **III. Conditions and Procedures for Application**

#### **1. Expectations for the Participating Organizations:**

- (1) This program is designed for organizations that intend to address specific issues or problems identified in their operation. Participating organizations are expected to utilize the program for those specific purposes.
- (2) This program is enriched with contents and facilitation schemes specially developed in collaboration with relevant prominent organizations in Japan. These special features enable the program to meet specific requirements of applying organizations and effectively facilitate them toward solutions for the issues and problems.
- (3) As this program is designed to facilitate organizations to come up with concrete solutions for their issues, participating organizations are expected to support the participants to prepare their presentation on the Job Report, which is described in this General Information.

#### **2. Nominee Qualifications:**

Applying Organizations are expected to select nominees who meet the following qualifications.

##### **Essential Qualifications:**

- 1) Current duties: be officials currently engaged in DRR and (will be) involved in the formulation/implementation of disaster risk reduction plans for natural disasters at local or central government level.
- 2) Experience in the relevant field: have work experience of more than 3 years in the field mentioned above.
- 3) Educational background: university graduate or equivalent.
- 4) Language: **have a competent command of spoken and written English.**  
**Especially, this program includes several intensive workshops and discussions in English.** (Please attach an official certificate for English ability such as TOEFL, TOEIC, etc., if possible).
- 5) Health: must be in good health, both physically and mentally, to participate in the program in Japan. Pregnant applicants are not recommended to apply due to the potential risk of health and life issues of mother and fetus.

#### **3. Required Documents for Application:**

- (1) **Application Form:** The Application Form is available at **the JICA office (or the Embassy of Japan)**.
- (2) **Photocopy of passport:** to be submitted with the Application Form, if you possess your passport which you will carry when entering Japan for this program. If not, you are requested to submit its photocopy as soon as you obtain it.

\*Photocopy should include the followings:

Name, Date of birth, Nationality, Sex, Passport number and Expiry date.

**(3) Nominee's English Score Sheet (Photocopy):** to be submitted with the Application Form, if you have any official documentation of English ability (e.g., TOEFL, TOEIC, IELTS).

**(4) Job Report:** to be submitted with the Application Form. Fill in Annex-1 of this General Information, and submit it along with the Application Form.

#### **4. Procedure for Application and Selection :**

##### **(1) Submission of the Application Documents:**

Closing date for applications: **Please inquire to the JICA office (or the Embassy of Japan).**

After receiving applications, the JICA office (or the Embassy of Japan) will send them to **the JICA Center in JAPAN by November 16, 2017.**

##### **(2) Selection:**

After receiving the documents through proper channels from your government, the JICA office (or the embassy of Japan) will conduct screenings, and then forward the documents to the JICA Center in Japan. Selection will be made by the JICA Center in consultation with concerned organizations in Japan. The applying organization with the best intention to utilize the opportunity of this Program will be highly valued in the selection.

Qualifications of applicants who belong to the military or other military-related organizations and/or who are enlisted in the military will be examined by the Government of Japan on a case-by-case basis, consistent with the Development Cooperation Charter of Japan, taking into consideration their duties, positions in the organization, and other relevant information in a comprehensive manner.

##### **(3) Notice of Acceptance:**

Notification of results will be made by the JICA office (or the Embassy of Japan) **not later than December 1, 2017.**

#### **5. Document(s) to be prepared by accepted participants before coming to Japan:**

##### **(1) Presentation on the Job Report: please see Annex1 "Presentation of Job Report"**

Date of the presentation: the 2<sup>nd</sup> week of this program

Style of the presentation: Power Point presentation

(10-15 slides with the photos that explain your activities)



**\*Participants are recommended to bring some useful data such as video, documents, etc. to share your country's recent disasters, recovery plan.**

**6. Conditions for Attendance:**

- (1) to strictly adhere to the program schedule,
- (2) not to change the program topics,
- (3) not to extend the period of stay in Japan,
- (4) not to be accompanied by family members during the program,
- (5) to return to home countries at the end of the program in accordance with the travel schedule designated by JICA,
- (6) to refrain from engaging in any political activities, or any form of employment for profit or gain,
- (7) to observe Japanese laws and ordinances. If there is any violation of said laws and ordinances, participants may be required to return part or all of the program expenditure depending on the severity of said violation, and
- (8) to observe the rules and regulations of the accommodation and not to change the accommodation designated by JICA.

## IV. Administrative Arrangements

### 1. Organizer:

(1) **Name:** JICA Kansai

(2) **Contact:** Ms.Ayaka UDA

(Uda.Ayaka.2@jica.go.jp and jicaksic-unit@jica.go.jp)

### 2. Implementing Partner:

- Kobe International Center for Cooperation and Communication (KIC)

[http://www.kicc.jp/index\\_en.html](http://www.kicc.jp/index_en.html) (English)

### 3. Course Leader:

(1) **Name:** Mr. Yuichi Honjo

Adviser - Kobe Institute of Urban Research

Research Professor - University of Hyogo

(2) **Remark:** Mr. Honjo played a key role for formulating and implementing the recovery plan of Kobe City (10-year plan), after the Great Hanshin Awaji Earthquake. He travels around the world to share Kobe's lessons and his knowhow which he wishes to serve as a reference for recovery from natural disaster in each country with people concerned. After the Great East Japan Earthquake, he took part in the formulation of Sendai City's recovery plan as an adviser.

### 4. Travel to Japan:

(1) **Air Ticket:** The cost of a round-trip ticket between an international airport designated by JICA and Japan will be borne by JICA.

(2) **Travel Insurance:** Coverage is from time of arrival up to departure in Japan. Thus, traveling time outside Japan will not be covered.

### 5. Accommodation in Japan:

JICA will arrange the following accommodation(s) for the participants in Japan:

JICA Kansai International Center (JICA Kansai)

Address: 1-5-2, Wakinohama-kaigandori, Chuo-ku, Kobe, Hyogo 651-0073, Japan

TEL: 81-78-261-0383 FAX: 81-78-261-0465

(where "81" is the country code for Japan, and "78" is the local area code)

If there is no vacancy at JICA Kansai, JICA will arrange alternative accommodations for the participants. Please refer to facility guide of JICA Kansai at its URL,

<https://www.jica.go.jp/kansai/english/office/index.html>

## **6. Expenses:**

The following expenses will be provided for the participants by JICA:

- (1) Allowances for accommodation, meals, living expenses, outfit, and shipping,
- (2) Expenses for study tours (basically in the form of train tickets),
- (3) Free medical care for participants who become ill after arriving in Japan (costs related to preexisting illness, pregnancy, or dental treatment are not included),and
- (4) Expenses for program implementation, including materials.

For more details, please see “III. ALLOWANCES” of the brochure for participants titled “KENSU-IN GUIDE BOOK,” which will be given before departure for Japan.

## **7. Pre-departure Orientation:**

A pre-departure orientation will be held at the respective country’s JICA office (Embassy of Japan), to provide participants with details on travel to Japan, conditions of the participation in the program, and other matters.

## ***V. Other Information***

1. Participants who have successfully completed the program will be awarded a certificate by JICA.
2. For the promotion of mutual friendship, JICA Kansai encourages international exchange between JICA participants and local communities, including school and university students as a part of development education program. JICA participants are expected to contribute by attending such activities and will possibly be asked to make presentations on the society, economy and culture of their home country.
3. Participants are recommended to bring laptop computers for your convenience, if possible. During the program, participants are required to work on the computers, including preparation of Action Plans, etc. Most of the accommodations have internet access. Also, there is a computer room in JICA Kansai where 14 desk-top computers are available with internet access.
4. Allowances, such as for accommodation, living, clothing, and shipping, will be deposited to your temporary bank account (opened by JICA) 2 to 5 days after your arrival in Japan. It is highly advised to bring some cash / traveler's check in order to cover necessary expense for this period.
5. It is very important that some of your currency must be exchanged to Japanese Yen at any transit airport or Kansai International Airport (KIX) in Osaka, Japan soon after your arrival. It is quite difficult to exchange money after that, due to limited availability of facility or time during the program.
6. Short trips are arranged during the program. It would be convenient if you bring a small bag and comfortable shoes.
7. This program will be carried out in winter season and contains some outdoor observation/practice program(s). Therefore, participants are recommended to bring a heavy jacket and other preparations against cold weather. Average Japanese temperature in between January and March in Kobe is below ten degrees Celsius.

## ***VI. Annex***

### **ANNEX-1 FORMAT OF JOB REPORT**

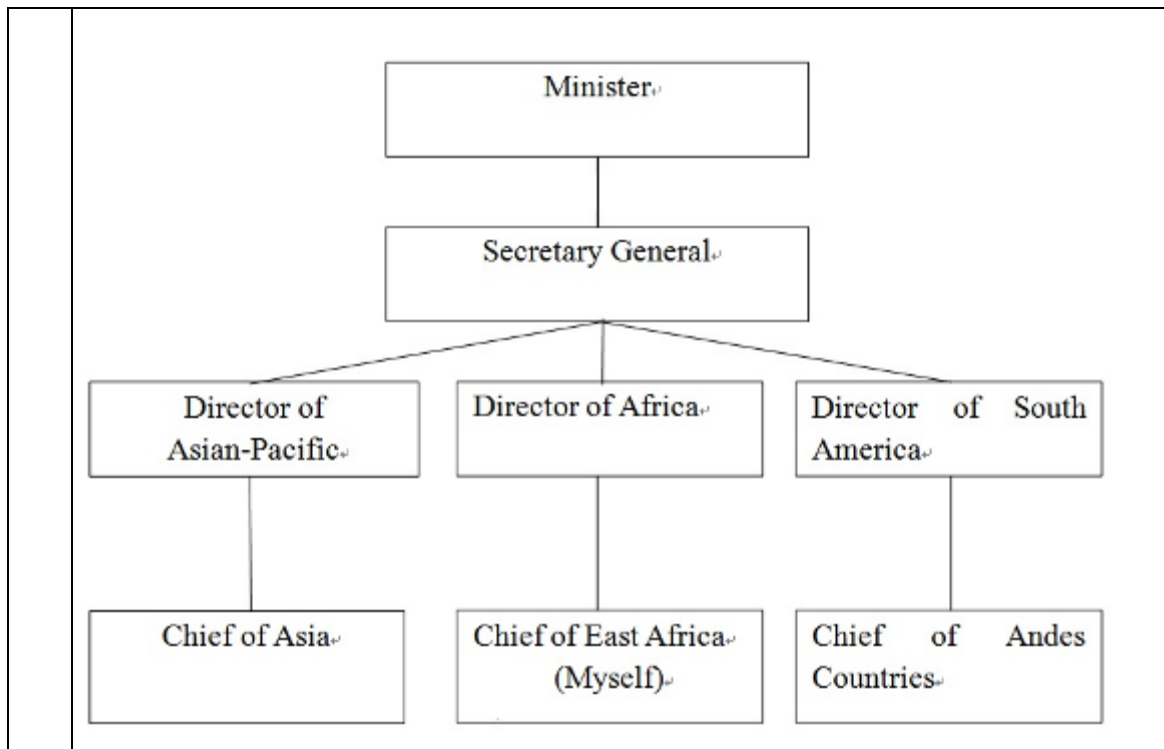
#### **Strategy for Resilient Societies to Natural Disasters(JFY 2017) Job Report**

##### **Preparation of Job Report**

This Job Report will be also used for the selection of participants. The Job Report should include the following information and be submitted together with your Application Form.

#### **1 Basic Information of nominee**

(1)	Your name (Country)	
(2)	Organization	
(3)	Department, division, section and/or unit.	
(4)	Your current functional title and duties (Please describe your occupation and professional responsibilities in 2017)	
(5)	Please attach an organogram of your organization and that of the whole disaster management system in your country (if available) and/or list of related organizations < <b>Sample</b> >	



**2 Information regarding DRR situation in your country**

(1) Information on types of disasters and damages caused by natural disasters
(2) Current disaster management plan(s), policies and related laws and regulations (Please bring important related laws and regulations in digital and printed format, if available in English.)
(3) Disaster management systems at each phase : Relief / Response, Recovery, Mitigation, Preparedness
(4) Roles of your organization (and your role), respective ministries, agencies, local governments and other organizations involved in the disaster management systems (Please attach organograms of your organization and the whole disaster management system that shows roles of respective departments/organizations.)
(5) 1) Total national budget 2) Budget allocation for disaster management: - The amount of national budget allocated to disaster management( expressed both as

ratio(percentage) in total national budget as well as in total amount-in USD(\$))
(6) International cooperation in the area of disaster management by UN organizations, other aid agencies, civil society and private sector. (both on-going and in the past)
(7) Challenges and desired improvements in your organization and those of the whole disaster management system
(8)Your personal expectation to this course. / Your organization's expectation to this course.

< sample > Job Report 1. (5) List of related organizations

Name of Organization	Basic Duty	Name of Agency	DRR Duty in Preparedness Phase	DRR Duty in Emergency Phase
Prime Minister (Cabinet Secretariat)				HQ of URDENT Disaster Management
Cabinet Office	Coordination of Line Ministries / Duties not belong to Line Ministries	Secretary of Minister for Disaster Management (Secretary of Central Disaster Management Council)	Stipulation of National Disaster Management Policy	HQ of MAJOR Disaster Management
		National Police Agency	Keep Public Order	Rescue and Search by Policemen
Ministry of Internal Affairs & Communication	Local Governments Affairs, Telecommunication	Fire and Disaster Management Agency	Prevention of Fire	Rescue and Search by Firefighters
Ministry of Health, Labor and Welfare	Public Health, Social Security, Welfare, Labor Safety, Empowerment			Disaster Rescue (Distribution of Funds to Affected Local Gov)
Ministry of Land, Infrastructure, Transport and Tourism	Public Works (Construction and Management of Dike, Road & Port), Land Use Planning, Transportation Safety		Flood Control	Emergency Public Works
		Meteorological Agency	Observation and Analysis of Weather, Earthquake	Alert of Emergent Phenomenon (Typhoon, Landslide, Tsunami etc.)
		Japan Coast Guard	Keep Security of Japanese Coast	Rescue and Search by Coast Guards
Ministry of Defense	Secure Independence and Peace of Territory of Japan			Rescue and Search by Self Defense Forces



## Presentation of Job Report

After selection, accepted participants are requested to make presentation for Job Report. Presentation session will be held at the beginning of the program in Japan.

### 1) Format:

- Please modify your Job Report to a presentation file, using Microsoft PowerPoint®.
- Please include pictures and maps for better understanding.
- One presentation per participant.
- Number of slides: about 10~15 slides.

### 2) Language: English

- 3) Presentation time: Approximately 15-20 minutes, including Q&A.  
To be informed at the beginning of the program in Japan

- 4) Presentation Date and Place:  
To be informed at the beginning of the program in Japan

### Others:

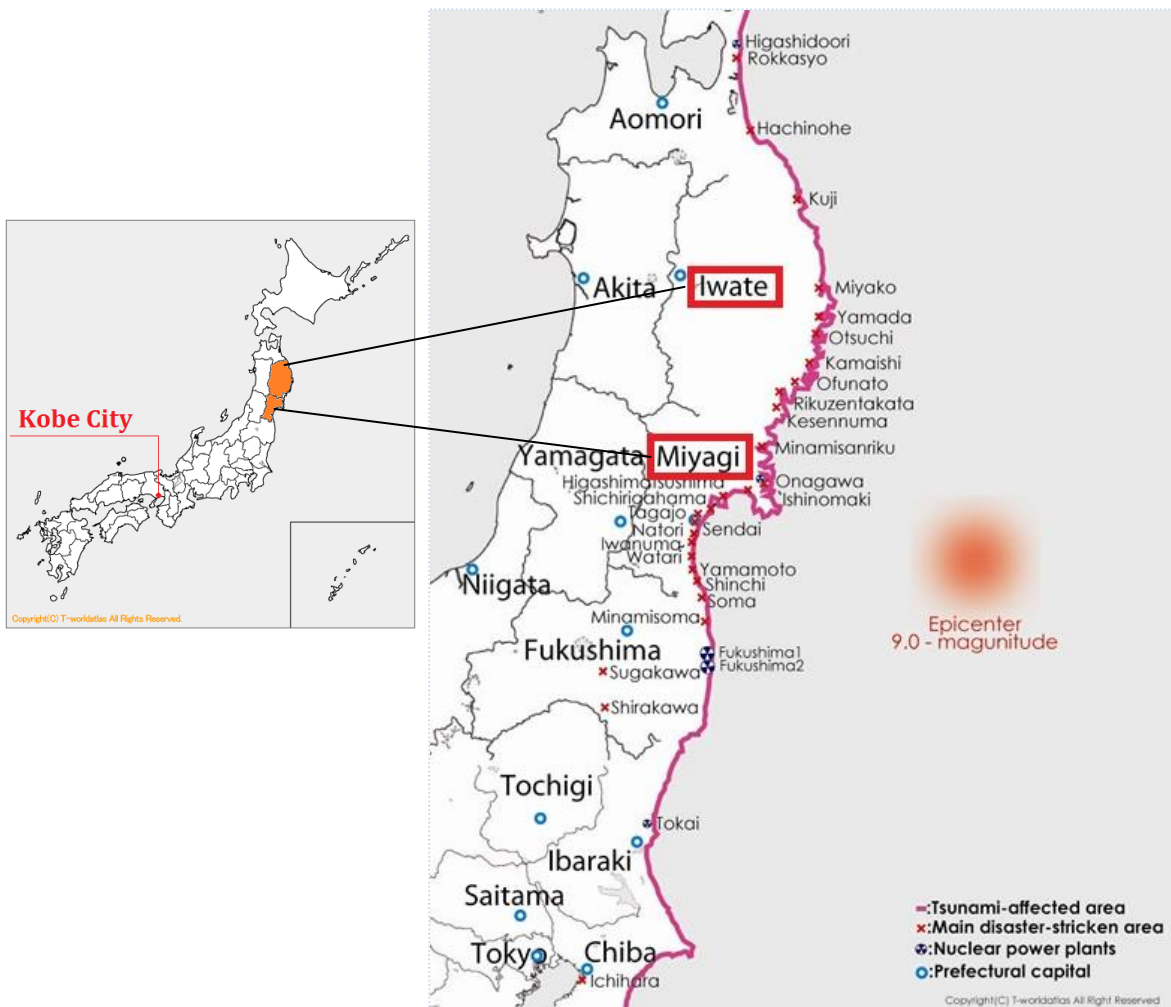
- Please bring your presentation data saved in a media like USB memory device.
- Please bring material(s) as a sample of DRR activities in your country (If any) in order to share them with other participants and Japanese attendees.

## ANNEX-2 <Reference>

- **Earthquake Restoration Review and Examination**  
<http://www.city.kobe.lg.jp/safety/hanshinawaji/revival/inspection/01-e.html>
- **The Great Hanshin-Awaji Earthquake Statistics and Restoration Progress (2010)**  
<http://www.city.kobe.lg.jp/safety/hanshinawaji/revival/promote/img/january.2010.pdf>
- **Comprehensive Strategy for Recovery from the Great-Hanshin-Awaji Earthquake**  
<http://www.city.kobe.lg.jp/safety/hanshinawaji/revival/promote/img/English.pdf>

### Overview of “The Great East Japan Earthquake”

A catastrophic earthquake, named "The 2011 off the Pacific coast of Tohoku Earthquake", with a magnitude of 9.0, occurred Friday, March 11, off the coast of Tohoku (the northeastern part of the Japan), and the tsunami generated by the earthquake caused devastating damage to parts of the Kanto and Tohoku regions, especially in the prefectures along the Pacific coast. The earthquake which has the largest magnitude ever recorded in Japan and 4th largest in the world, recorded a maximum seismic intensity 7 (JMA Seismic Intensity) at Kurihara City, Miyagi Prefecture.



<For information>

	The Great East Japan Earthquake	The Great Hanshin-Awaji Earthquake
Date and Time	March 11, 2011, around 14:48	January 17, 1995, 5:46
Hypocenter/ depth Scale	Offshore the Sanriku Coast, app. -24km Magnitude 9.0(1,000times more energy than Hanshin-Awaji)	Awaji Island, app. -16km Magnitude 7.3
Intensity by area (Japanese scale)	7:Northern Miyagi 6+:Central and Southern Miyagi, Fukushima Naka-dori & Hama-dori, Northern and Southern Ibaraki, Northern and Southern Tochigi 6-:Southern coast, northern and southern upcountry in Iwate, Aizu in Fukushima, Southern Gunma, Southern Saitama, Northwestern Chiba	7:Kobe, Ashiya, some parts of Nishinomiya 6:Sumoto
Source region	500km in length, 200km in width	40-50 km in length
Tsunami	Warning (on great tsunami) issued at 14:49 on March 11. Measurements at tide stations Erimo-cho, Shoya: max. 3.5m Miyako: max. 8.5m or higher Oofunato: max. 8.0m or higher Kamaishi: max. 420cm or higher Ishinomaki, Ayukawa: max. 8.6m or higher Soma: max. 9.3m or higher Ooarai: max. 4.0m	None
Other	Radiation leakage from NPP	

## **ANNEX-3** Action Plan

In this program, participants are expected to formulate and present a feasible Action Plan consisting of one or more phases of the disaster management cycle - response, recovery, mitigation, preparedness – toward implementation upon returning to participants' countries.

### **What is Action Plan?**

During the program, each participant is required to prepare his/her Action Plan(AP). He/She is expected to make a presentation of Action Plan at the end of the program in Japan and in his/her organization after returning to respective countries.

The purpose of its preparation is to identify a specific risk and a concrete measure for it. You are recommended to focus on one topic you are able to carry out after returning to your country. Therefore, Action Plan should be concrete and practical. Please try to make your Action Plan by using the existing human and financial resources in your organization in a most efficient and effective way as much as possible.

### **【Contents of Action Plan】**

<1>

- a. Title
- b. “Resilient” Society” for your country
- c. Problems and causes
- d. Objectives (Goals)
- e. Description of target area
- f. Responsible bodies
- g. Stakeholders
- h. Activities(Short term/Long term) / measures
- i. Budget
- j. Implementation schedule(activities)
- k. Others

<2>

- a. Any awareness/findings that you gained in this program

**Note:** Participants will have more detailed guidance during the program in Japan.

## **ANNEX- 4**

(Reference) The following is the schedule of **previous program** (Jan.to Feb, 2017).

The schedule in 2018 is subject to change.

Date	Day	Time	Venue	Type	Phase	Module	Subject
1/9	MON						Arrival in Japan
1/10	TUE	9:30-12:00	JICA Kansai BR(2F)				Briefing(Three-Course Briefing Jointly Held)
		13:30-15:30					Program Orientation
		16:00-18:00		L			JICA's Strategy for Mainstreaming DRR - Towards Resilient Society(Joint Lecture)
		18:00-19:30		L			Japanese Language Class
1/11	WED	10:00-11:30	JICA Kansai BR(2F)	L			~General Orientation~ Japanese History and Culture
		13:15-15:15		L			Japanese Economy
		15:30-17:30		L			Japanese Society
		18:00-19:30	JICA Kansai SR33+34(3F)	L			Japanese Language Class
1/12	THU	10:00-12:00	Hyogo Prefecture Government Hall	L			Disaster Management Administration of Local Government Hyogo Prefecture
		14:00-16:00	JICA Kansai SR33+34(3F)	L			Disaster Risk Management Policy in Japan
		17:00-18:30	JICA Kansai SR33+34(3F)	L			Japanese Language Class
1/13	FRI	10:10-12:30	Disaster Reduction and Human Renovation Institute	O			Disaster Reduction and Human Renovation Institution
		14:00-16:00	JICA Kansai SR33+34(3F)	L			Disaster Mitigation Education in Hyogo Prefecture
		17:00-18:30	JICA Kansai SR33+34(3F)	L			Japanese Language Class
1/14	SAT	10:00-12:30	JICA Kansai SR33+34(3F) & Oyasutei Market	L			Japanese Language Class
		PM		N			
1/15	Sun			N			

1/16	MON	9:30-12:00	JICA Kansai SR33+34(3F)	L			Course Orientation
		13:30-17:00	JICA Kansai SR33+34(3F)	W			PCM Workshop
1/17	TUE	11:00-12:30	HAT Kobe	O			Hyogo Memorial Walk 2017
		14:00-16:00	Higashi Yuenchi, Kobe City Hall and etc.	O			Explanation on Higashi Yuenchi(East Amusement Park) & Kobe City Center
1/18	WED	9:30-12:00	JICA Kansai SR33+34(3F)	P		5	Job Report Presentation
		13:30-16:00		P		5	
1/19	THU	9:30-12:00	JICA Kansai BR(2F)	P		5	Job Report Presentation
		13:30-16:00		P		5	
1/20	FRI						<b>Check out JICA Kansai and move to Daiwa Roynet Hotel Kobe Sannomiya by bus</b>
		10:00-11:30	Hyogo Prefectural Emergency Management and Training Center	O		1	Observation of Hyogo Prefecture Wide-Area Disaster Management Base
		13:30-17:00	JICA Kansai 33&34(3F)	W		5	PCM Workshop
1/21	SAT	9:00-12:00	Hibarigaoka Gakuen Senior High School	D			Development Education (JICA Program, International Exchange)
1/22	Sun			N			

1/23	MON	9:30-12:30	JICA Kansai BR(2F)	W	Relief / Response  Module1	4	Pre-explanation on Kaeru(Frog) Caravan Event(Disaster Mitigation Education Event)
		13:30-15:20	Hyogo Prefectural Maiko High School	L		4	Human Resource Development and Disaster Mitigation Education in High school
1/24	TUE	9:00-12:00	KIC	L		1	Gender in Disaster Reduction and Recovery
		13:30-15:00	Hotel Okura Kobe	L		2	International Recovery Forum 2017
		15:30-17:30	KIC	L		4	Introduction to Disaster Mitigation Curriculum in School Education in Nepal
1/25	WED	9:30-12:00	Kobe City Crisis Management Center	L		1	Crisis Management System and Initial Emergency Response of Kobe City
		14:00-16:30	JICA Kansai SR 42(4F)	L		1	Evacuation center(Welfare Evacuation Center and etc.)/Temporary Housing(Emergency Rented Housing/Emergency Construction Housing)
1/26	THU	9:30-12:00	JICA Kansai SR 42(4F)	L		1	Information about Disaster in Kobe City: How Local Government Offers Disaster Information
		13:30-16:00	JICA Kansai SR 42(4F)	L		1	Flood Damage and Countermeasures (Learn from Latest Example of Joso and Sanjo City)
1/27	FRI	9:30-12:00	JICA Kansai SR 42(4F)	L		1	Support Activities from Overseas Countries - International Cooperation NGO's Support Activities -
		13:30-16:00		L		1&5	Review
1/28	SAT			N			
1/29	SUN	12:00-16:30	JICA Kansai Gymnasium	W		4	Participating Kaeru(Frog) Caravan Event : Disaster Mitigation Education Event by Plus Arts (NPO)
1/30	MON						
		9:00-12:00	JICA Kansai SR 33 & 34(3F)	L	4	Psychology for Disaster Management: How to raise awareness/Cases of Disaster Mitigation Education in Japan	
		13:00-15:00		L	2&3	Characteristics of the Great East Japan Earthquake	
		15:20-19:00				Study Trip to Tohoku Move (JICA Kansai→Osaka Airport→Iwate Hanamaki Airport )	

1/31	TUE	8:00-10:00					Check out before meeting time Move (Hotel → Sea Plaza Kamaishi)
		10:00-12:00	Sea Plaza Kamaishi	L		2	Role of Community Radio in Disaster Relief Period: Kamaishi Saigai FM
		13:00-13:40	Kamaishi City Office	L		2	Recovery in Kamaishi City
		13:40-14:20		L		2	Activities of Kamaentai(Kamaishi Regional Coordinators)
		14:20-15:00		L		2	Discussion
		15:00-15:30		O		2	Observation of Kamaishi City Damage Area
		16:00-17:00		Kerobe(Fishery Village)		O	2 & 3
							Move(Kerobe → Kesenuma City)
2/1	WED	7:45-8:50			Recovery / Mitigation  & Tohoku Trip  Module2 & 3		Move (Hotel→Minamisanriku Town)
		9:00-10:30	Minamisanriku Town, Kesenuma City, Miyagi Prefecture	O		2	Minamisanriku Town Guided and Talked by Local Guide
		10:30-11:30	On Bus	L		2 & 3	Follow Comments
		14:00-16:00	Zuiganji Temple	O			Zuiganji Temple visit
2/2	THU	9:00-9:30	On Bus	L		2 & 3	Follow Comments
		9:30-11:30	Nobiru Citizen Center	L		2	Higashimatsushima Community Reconstruction Facilitators and the Locals(Lecture and discussion)
		13:30-15:30	Community Hall Aoi Area, Higashimatsushima City	L		2 & 3	Efforts for Community Recovery
		18:50-20:20					Move (Higashimatsushima city → Sendai Airport→Osaka Airport →JICA Kansai)
2/3	FRI	10:00-12:00	JICA Kansai SR33+34(3F)	L		2 & 3	Unpaved Roads Maintenance in Developing Countries(DONOU Project)
		13:30-16:00	JICA Kansai SR33+34(3F)	L		2&3 5	Review



2/4	SAT					N	
2/5	SUN					N	
2/6	MON	9:30-12:00	JICA Kansai SR33+34(3F)	L		2	Kobe City Recovery Plan
		13:30-16:00		L		2	Community Development Aimed at Recovery from the Great Hanshin-Awaji Earthquake
2/7	TUE	9:00-15:00	JICA Kansai SR33+34(3F)	W		2 & 3	Workshop on Community Development
		15:30-16:30	Rokkomichi area,Nada Ward	W		2 & 3	Workshop on Community Development(Field Observation)
2/8	WED	9:30-12:00	JICA Kansai SR33+34(3F)	L		2	Mental Health Care(PTSD)
		14:00-17:00	Nodakita Furusato Net	L		2 & 3	Post Earthquake Community Development of Nodakita Area from Residents' Perspective Post Earthquake Community Development of Noachite Area from Consultant's Perspective
2/9	THU	9:30-11:30	JICA Kansai SR 33&34(3F)	L		3	Earthquake Information and Tsunami Warning Service at Regional Center
		13:30-15:30	JICA Kansai SR 33&34(3F)	L		2 & 3	Disaster and Native Forest
2/10	FRI	9:30-12:00	KIC	L		2 & 3	Earthquake Resistance
		14:00-16:30	JICA Kansai SR 33&34(3F)	L		2 & 3 5	Review
2/11	SAT						Home Visit
2/12	SUN			N			
2/13	MON	10:00-12:00	JICA Kansai SR 31&32(3F)	L		4	Outline of Kobe City Disaster-Safe Welfare Communities (BOKOMI)
		13:30-16:30	Yokoya Hall & Kawai Park, Higashinada Ward	L		4	Preventative Measures against Tsunami and Measures/Drill for People Requiring Assistance during a Disaster in BOKOMI (Uozaki Town)
2/14	TUE	9:00-12:00	Rokko Sabo Dam Office	L/O		3	Countermeasure Projects against Erosion Control(Sabo) in Urban Areas
		14:30-17:00	JICA KANSAI SR42(4F)	L		3	Fundamental Mechanism of Earthquake Response Reduction in Historical Building Structures

2/15	WED						Move (Kobe city→Hiroshima city )
		13:30-17:00	Hiroshima	O			Hiroshima Visit (Hiroshima Peace Memorial Park and Museum)
2/16	THU	9:45-12:15	Hiroshima	O	Hiroshima Trip	2&3	Hiroshima Landslides Observation
		14:00-16:00		O			Visit Miyajima-One of the Top Three Scenic Spots in Japan
							Move(Hiroshima → Shinkobe)
2/17	FRI	9:00-12:00	JICA Kansai SR 31&32(3F) Aotani Area	W	Preparedness	4	Walking around Aotani Area (Town Watching)
		13:30-16:00	JICA Kansai SR 31&32(3F)	W		4	Developing an Hazard Map (Safety Map)
2/18	SAT			N	Module 4		Submission of JICA Questionnaire
2/19	SUN			N			
2/20	MON	9:30-12:00	University of Hyogo Himeji Campus	D	Preparedness	4	Presentation of Activities by Post Graduate Students of Disaster Nursing Program, University of Hyogo, and Exchange of Ideas
		14:00-16:30	JICA Kansai SR 31&32(3F)	L		4&5	Review
2/21	TUE	11:00-11:30	No.4 Meeting Room, Building No.1, Kobe City Hall		Module 4		Courtesy Call to Kobe City Mayor
		14:00-16:30	JICA Kansai SR 31&32(3F)	L		4	Resilient Societies to Natural Disasters
2/22	WED	9:30-12:00	JICA Kansai SR 31&32(3F)	P	Action Plan	5	Action Plan Presentation
		13:30-16:00		P		5	Action Plan Presentation
2/23	THU	9:30-12:00	JICA Kansai SR 31&32(3F)	P	Module 5	5	Action Plan Presentation
		13:30-16:00		P	5	Action Plan Presentation	
2/24	FRI	10:00-11:30	JICA Kansai SR 33&34(3F)				Evaluation Meeting
		11:30-12:00	JICA Kansai BR				Closing Ceremony
		12:00-13:00	JICA Kansai SR 33&34(3F)				Farewell Party
2/25	SAT						Departure

## ***For Your Reference***

### **JICA and Capacity Development**

The key concept underpinning JICA operations since its establishment in 1974 has been the conviction that “capacity development” is central to the socioeconomic development of any country, regardless of the specific operational scheme one may be undertaking, i.e. expert assignments, development projects, development study projects, Knowledge Co-Creation programs (until 2015, so called “training”), JOCV programs, etc.

Within this wide range of programs, Knowledge Co-Creation Programs have long occupied an important place in JICA operations. Conducted in Japan, they provide partner countries with opportunities to acquire practical knowledge accumulated in Japanese society. Participants dispatched by partner countries might find useful knowledge and re-create their own knowledge for enhancement of their own capacity or that of the organization and society to which they belong.

About 460 pre-organized programs cover a wide range of professional fields, ranging from education, health, infrastructure, energy, trade and finance, to agriculture, rural development, gender mainstreaming, and environmental protection. A variety of programs are being customized to address the specific needs of different target organizations, such as policy-making organizations, service provision organizations, as well as research and academic institutions. Some programs are organized to target a certain group of countries with similar developmental challenges.

### **Japanese Development Experience**

Japan was the first non-Western country to successfully modernize its society and industrialize its economy. At the core of this process, which started more than 140 years ago, was the “*adopt and adapt*” concept by which a wide range of appropriate skills and knowledge have been imported from developed countries; these skills and knowledge have been adapted and/or improved using local skills, knowledge and initiatives. They finally became internalized in Japanese society to suit its local needs and conditions.

From engineering technology to production management methods, most of the know-how that has enabled Japan to become what it is today has emanated from this “*adoption and adaptation*” process, which, of course, has been accompanied by countless failures and errors behind the success stories. We presume that such experiences, both successful and unsuccessful, will be useful to our partners who are trying to address the challenges currently faced by developing countries.

However, it is rather challenging to share with our partners this whole body of Japan’s developmental experience. This difficulty has to do, in part, with the challenge of explaining a body of “tacit knowledge,” a type of knowledge that cannot fully be expressed in words or numbers. Adding to this difficulty are the social and cultural systems of Japan that vastly differ from those of other Western industrialized countries, and hence still remain unfamiliar to many partner countries. Simply stated, coming to Japan might be one way of overcoming such a cultural gap.

JICA, therefore, would like to invite as many leaders of partner countries as possible to come and visit us, to mingle with the Japanese people, and witness the advantages as well as the disadvantages of Japanese systems, so that integration of their findings might help them reach their developmental objectives.



***CORRESPONDENCE***

For enquiries and further information, please contact the JICA office or Embassy of Japan.

Further, address correspondence to:

**JICA Kansai International Center (JICA Kansai)**

**Address: 1-5-2, Wakinohama-kaigandori, Chuo-ku, Kobe, Hyogo 651-0073, Japan**

**TEL: +81-78-261-0383 FAX: +81-78-261-0465**